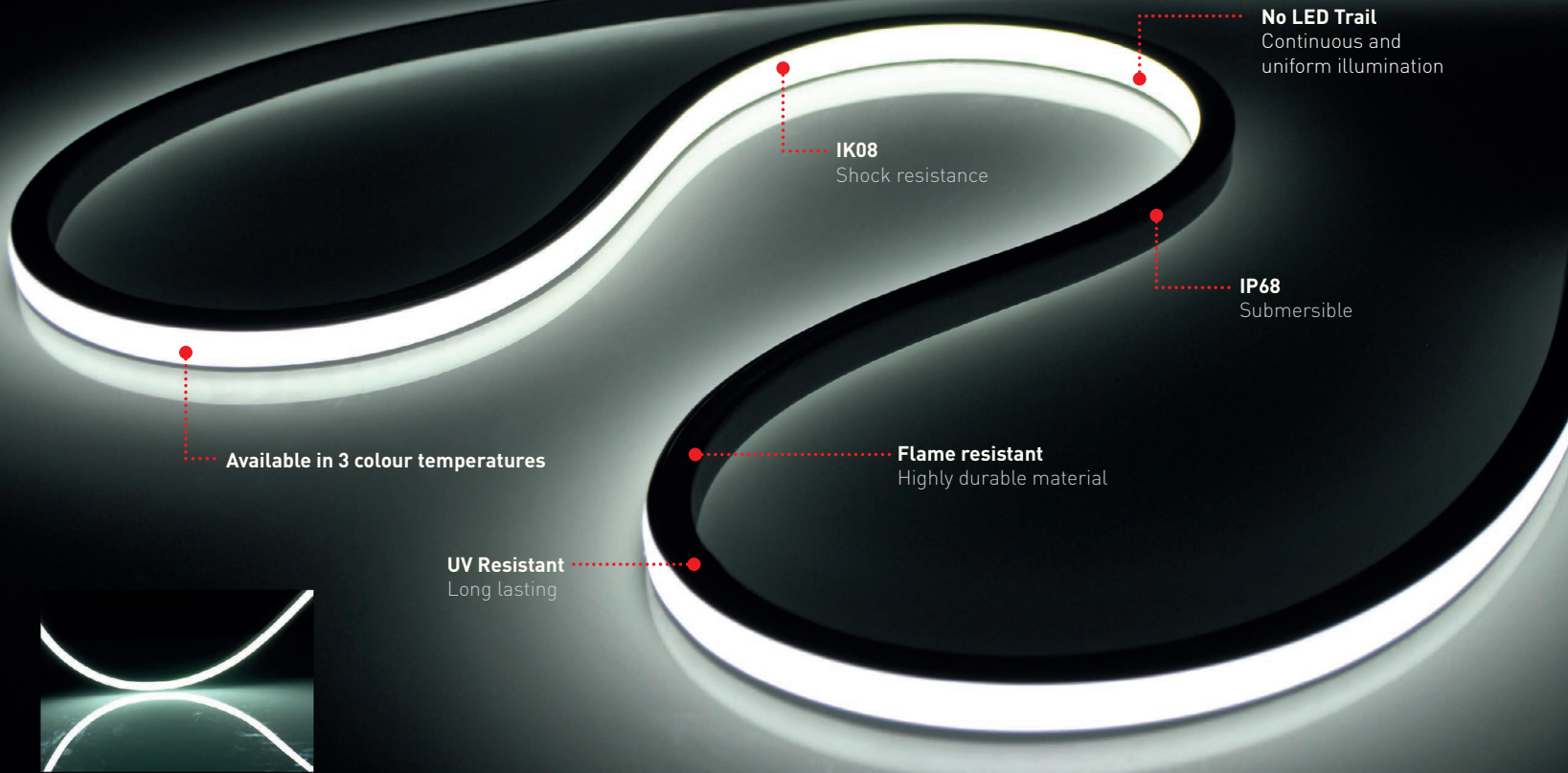


orlight®

FROM SOURCE TO SITE



Reflex

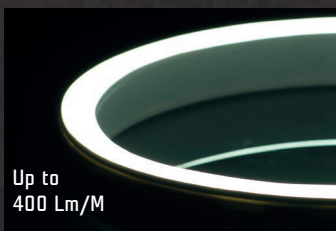
Continuous Linear LED provides endless opportunities for any application. IP68 rated, submersible, internal or external usage, No LED trail/hotspots. All relevant accessories are provided to suit your requirements.

ARCHITECTURAL LINEAR LED SOLUTION



2 Product types available to suit your application:

REFLEX - Top edge bending



Up to 400 Lm/M

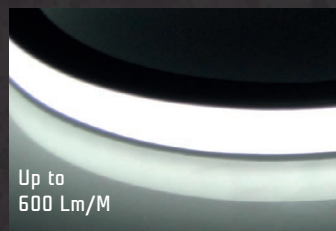


11.5 mm Width

BEND DIAMETER > 120mm

LIGHT SURFACE

REFLEX-S - Side edge bending



Up to 600 Lm/M



16 mm Width

BEND DIAMETER > 300mm

LIGHT SURFACE

Available in
3 Colour Temperatures

2400

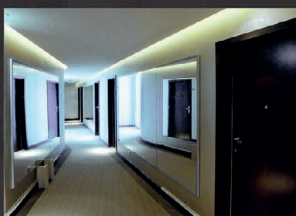
Extra Warm White

2700

Warm White

3500

Warm Neutral White



orlight®

FROM SOURCE TO SITE

www.orlight.com | 01707 663 883

ORLIGHT *SHARP* SERIES

Our **new** range of retrofit lamps provide **incredible performance** whilst delivering exceptional value

RoHS CE



HIGH POWER LED ■ RETROFIT ■ TUNEDIM™ TECHNOLOGY ■ HIGH QUALITY + QUANTITY OF LIGHT ■ ADVANCED THERMAL MANAGEMENT

Available in 4 colour temperatures.



Product Information:

Product	Beam Angle	Colour Temperature	Lumens (up to) Non-Dimmable	Lumens (up to) Dimmable	CRI
5W SHARP GU10	38°	Warm White: 2700K	EW: 350lm	EW: 300lm	82
		Warm White: 3000K	WW: 350lm	WW: 300lm	82
		Neutral White: 4000K	NW: 380lm	NW: 350lm	81
		Cool White: 5000K	CW: 400lm	CW: 350lm	80
7W SHARP GU10	38°	Warm White: 2700K	EW: 520lm	EW: 480lm	82
		Warm White: 3000K	WW: 520lm	WW: 480lm	82
		Neutral White: 4000K	NW: 600lm	NW: 520lm	81
		Cool White: 5000K	CW: 610lm	CW: 550lm	81

TUNEDIM™ TECHNOLOGY INSIDE

See our **TuneDIM™** technology in action:
TEST VIDEOS: www.orlight.com/dimming



COMPATIBILITY TESTED AT ORLIGHT ON : Legrand, Lutron, Hamilton, Helvar, MK, Mode, Rako, Zano.

Future proof your design by using retrofit technology within our **architectural downlight range**



2 White RAL options:



Finish options*



*Availability dependent on fixture type

